



RAD Server

Delivering Enterprise data via REST in minutes



Antonio Zapater

Pre-sales consultant
Embarcadero Technologies
antonio.zapater@embarcadero.com

 **embarcadero**[®]



Agenda

1 System Architecture Evolution

2 What is REST API?

3 RAD Server Overview

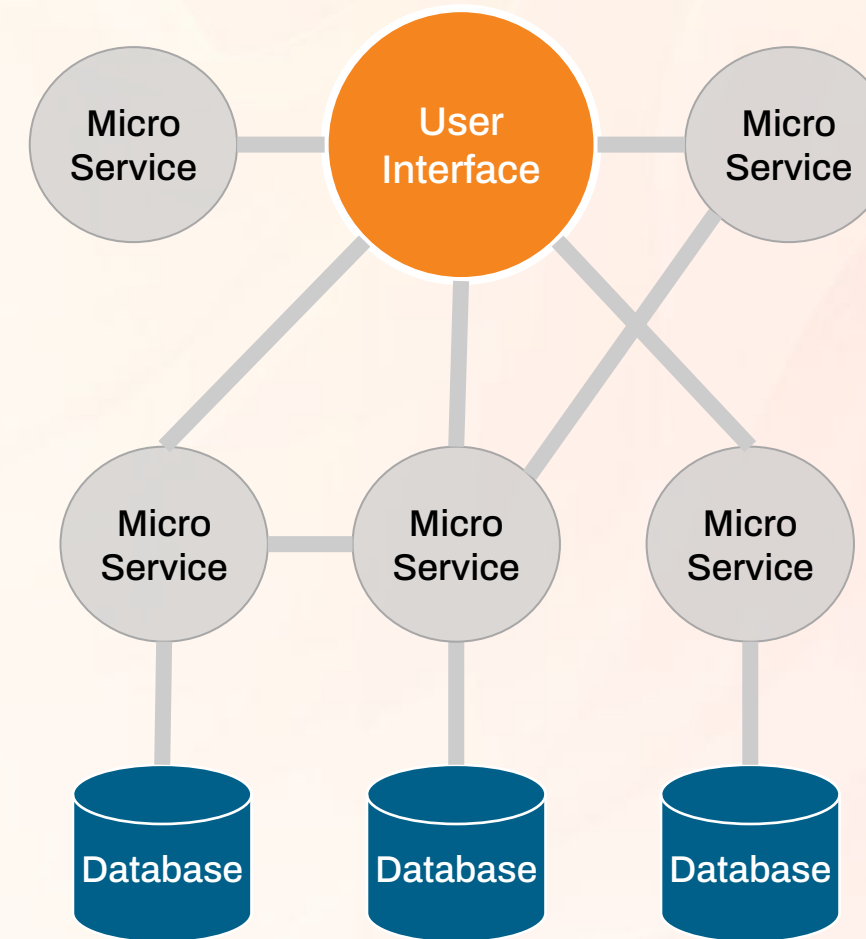
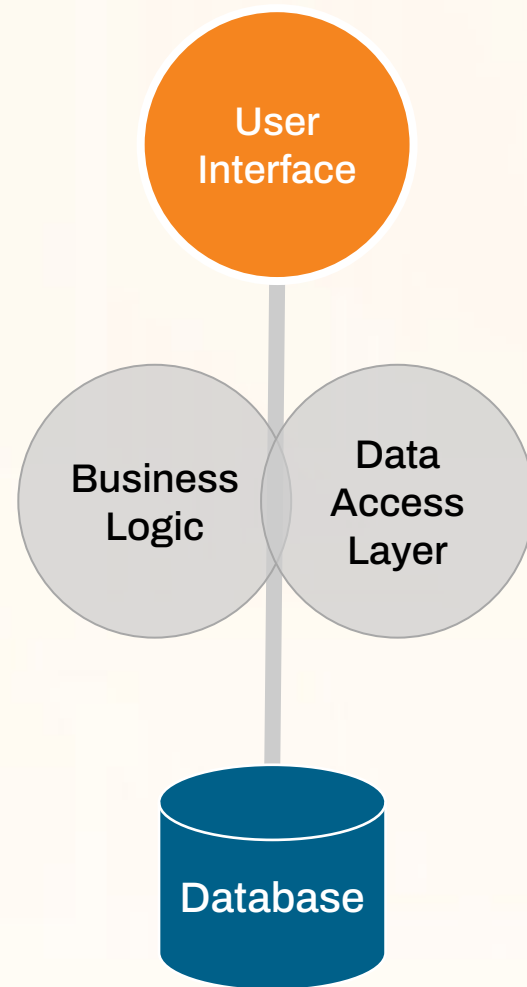
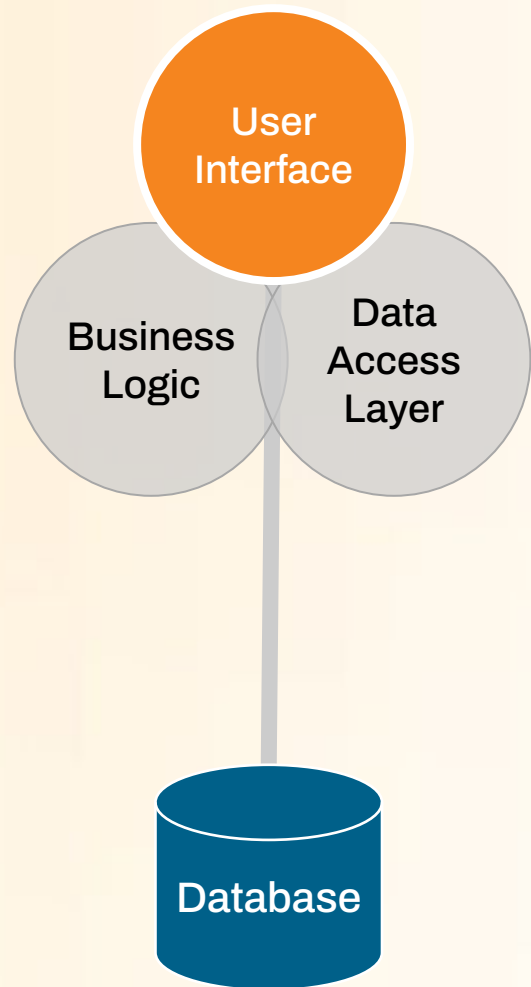
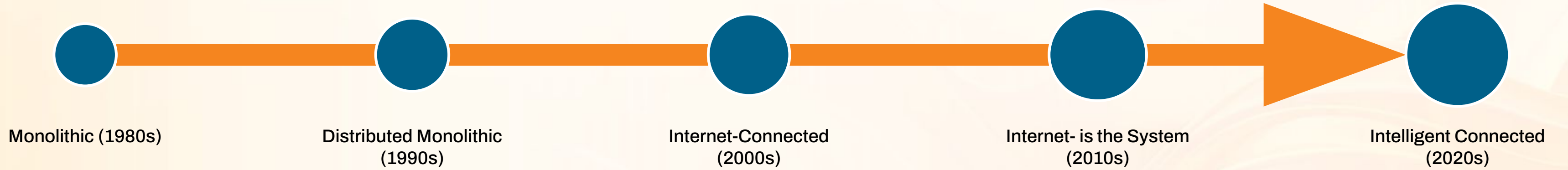
4 Demonstrations

5 More Information

6 Q&A

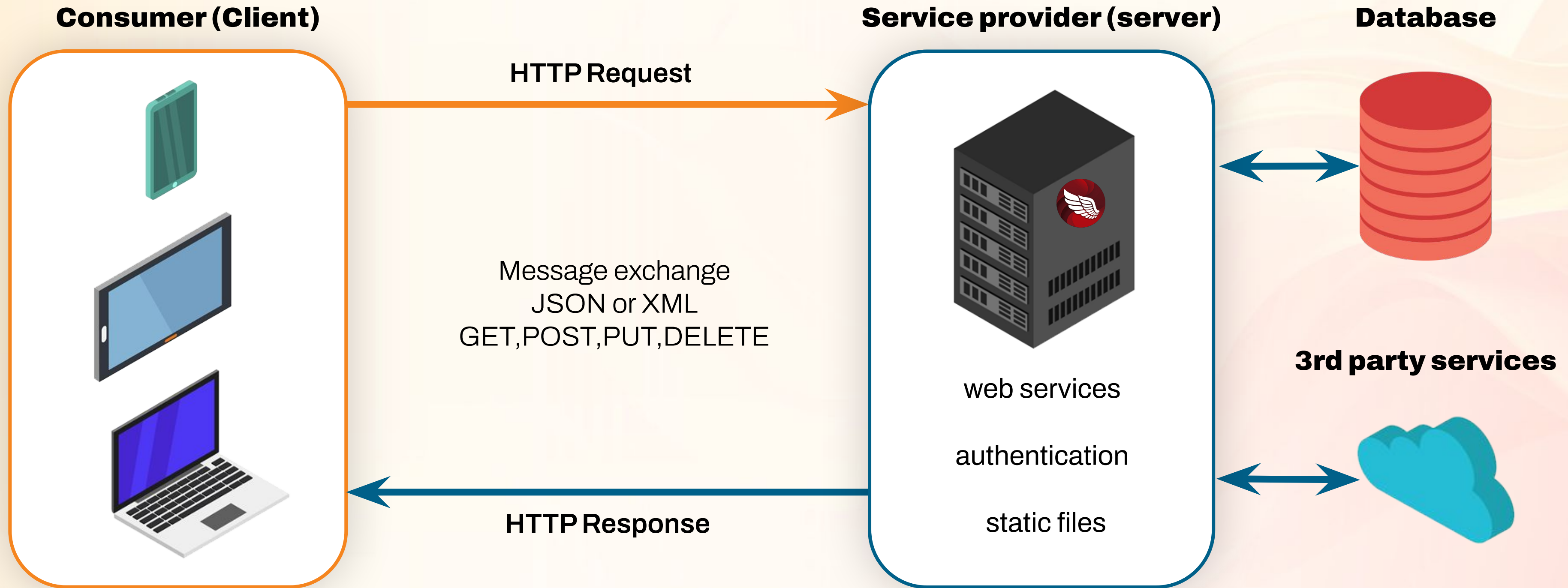
System Architecture Evolution

System Evolutions

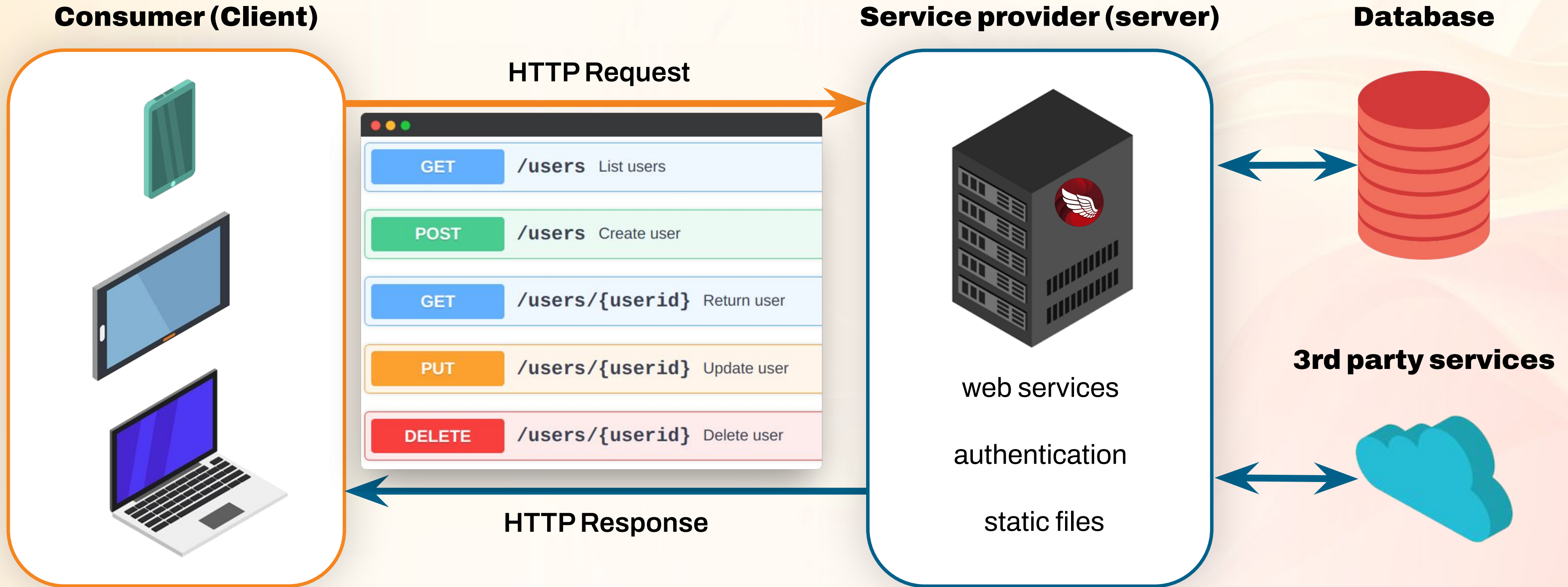


Architecture Innovations

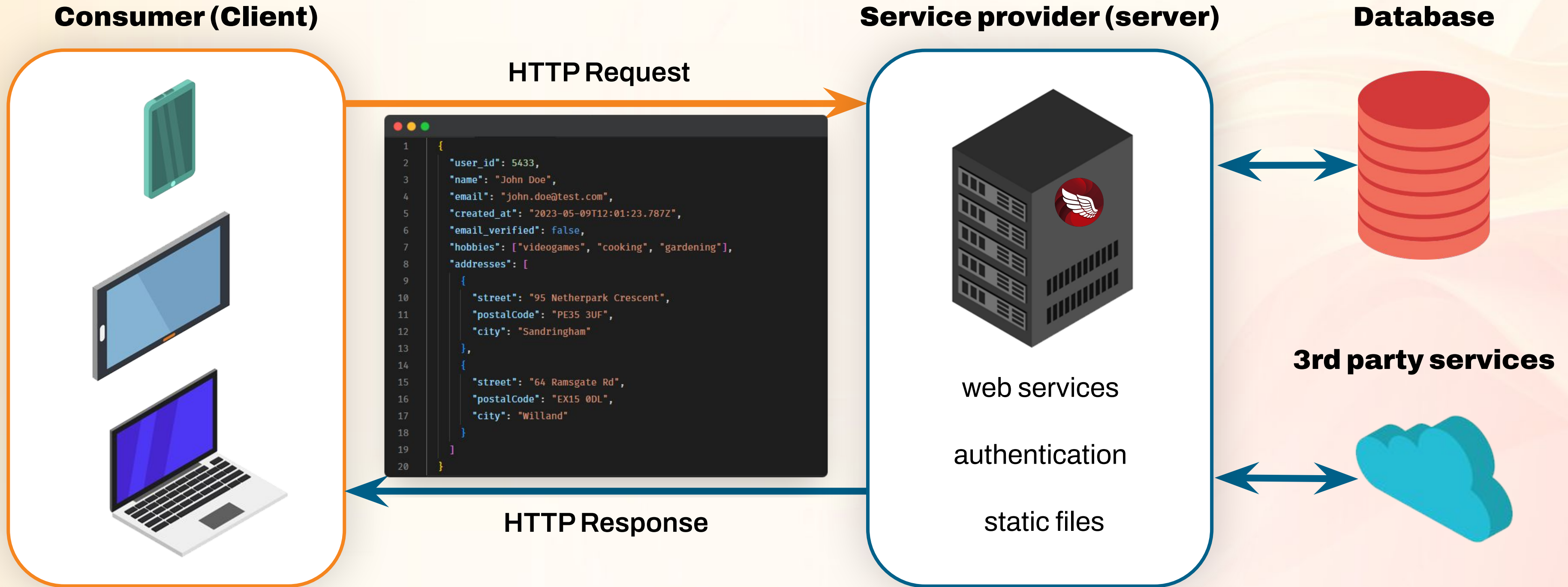
What is REST API Architecture?



What is REST API Architecture?



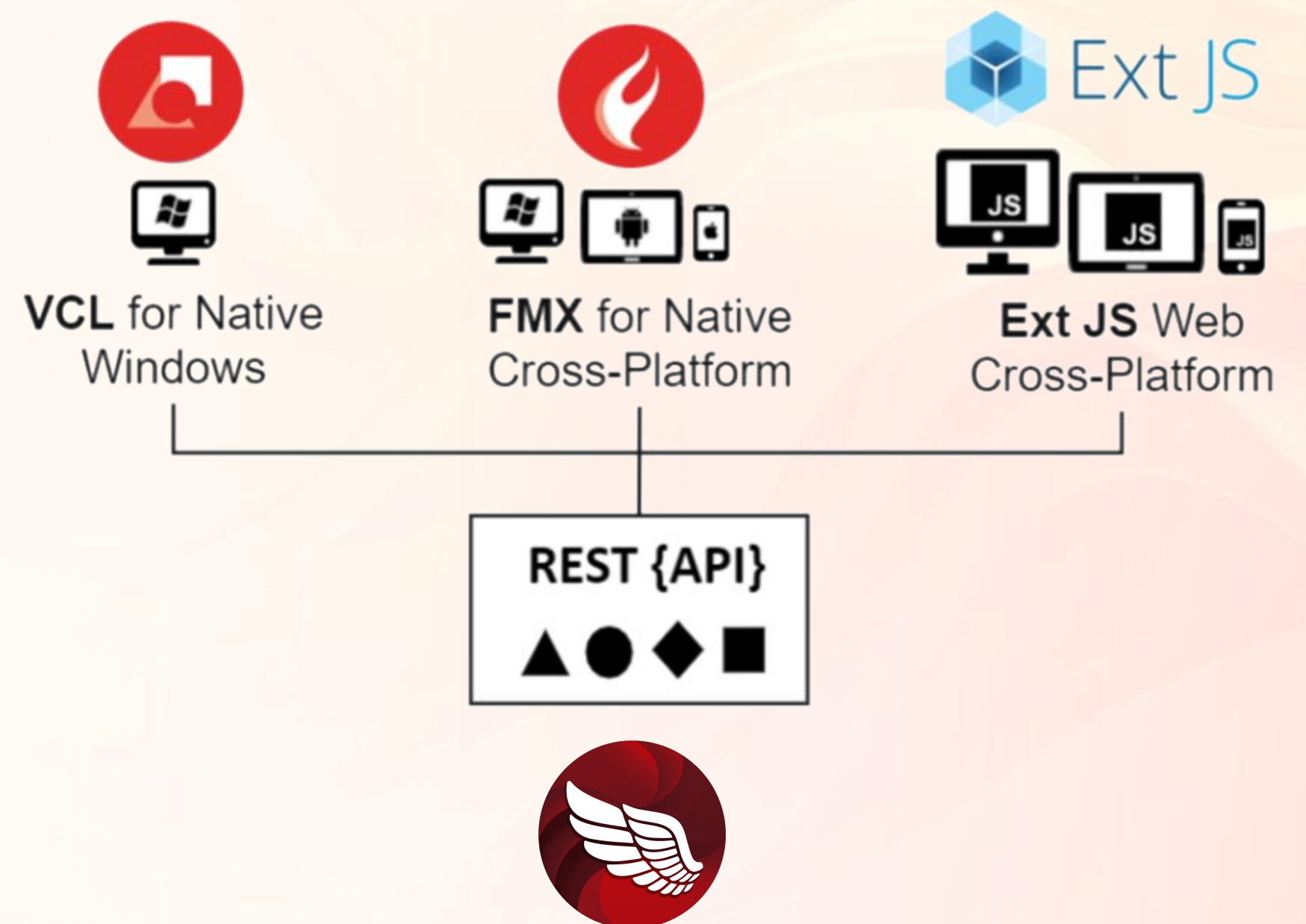
What is REST API Architecture?



What is RAD Server (in one slide)?

A fully powered M.E.A.P. (Mobile Enterprise Application Platform)

- The engine for multi-tier applications
 - Deploy on premise or in the cloud
 - Comes with tons of ready-to-use features
- Migrate your data access logic to a web service
- Build flexible and thin Windows VCL clients, multi-device clients for desktop and mobile, Web + JavaScript clients or micro services
- Works on Windows (IIS), Linux (Apache) and Docker



RAD Server - Multi-tier Made Easy!

Finally... a backend solution as easy as Delphi

LITE DEPLOYMENT

NO CODE INSTANT
API

BaaS

ACCESS CONTROL

MULTI-TENANCY
SUPPORT

STATIC FILES
PROVIDER

CUSTOMIZED CRUD

API ANALYTICS

WINDOWS & LINUX

SQIDS SUPPORT

BUILT-IN SECURE
DATASTORE

SWAGGER OPEN API

DOCKER SUPPORT

AUTH TOKEN

SYSADMIN API

PUSH
NOTIFICATIONS

USER LOCATION
PROXIMITY

ENTERPRISE DATA

ACTIVE DIRECTORY
SUPPORT

CUSTOM
AUTHENTICATION



Demo

GitHub demo

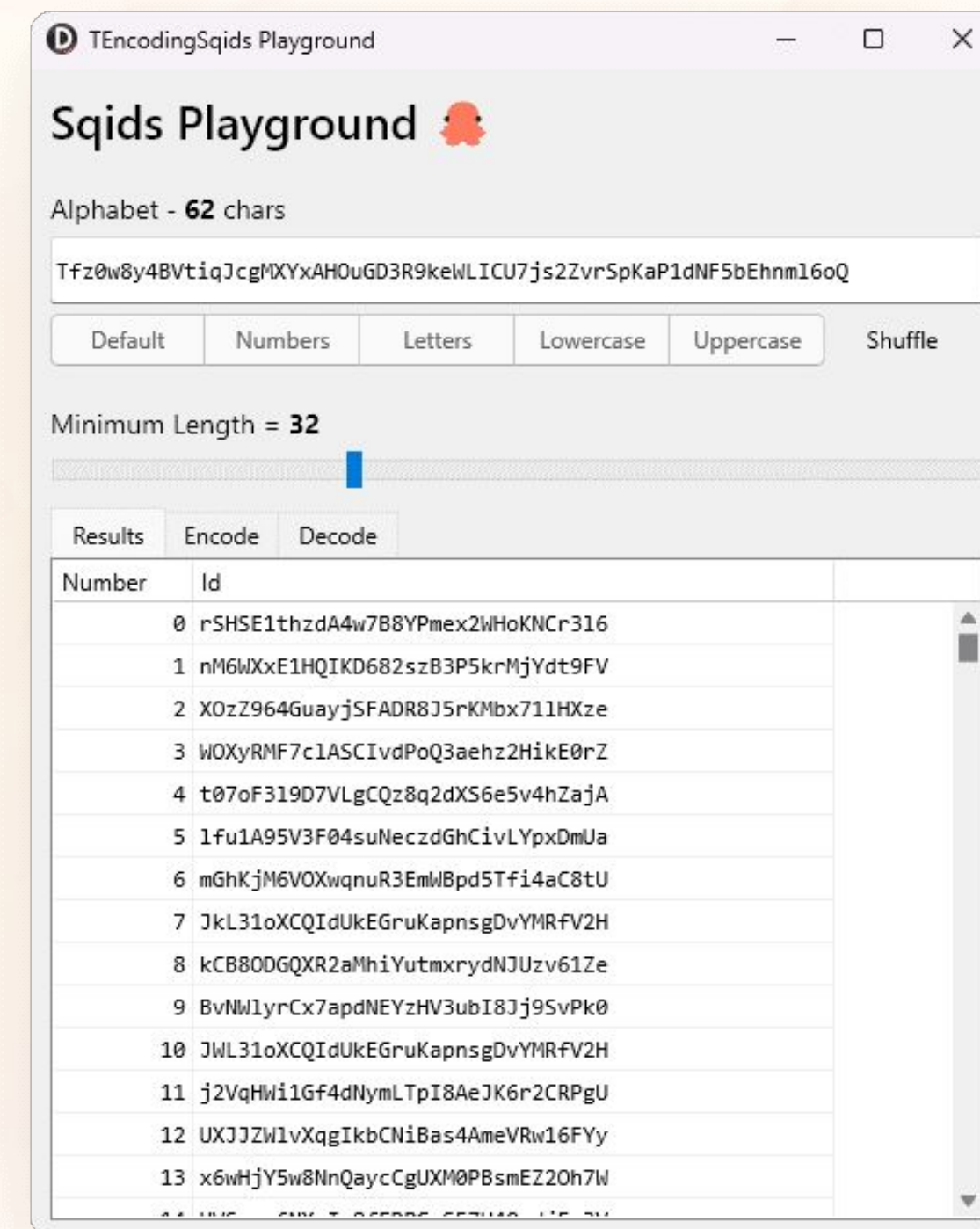


RAD Server y Sqids

- Sqids is an improved version of Hashids: sqids.org
- Replace physical IDs in a URL with a string (YT style)
- /customers/**12345** → /customers/**tyyksol**e
- Fully integrated and ready-to-use in RAD Server
- Available as a standalone class **TSqidsEncoding**

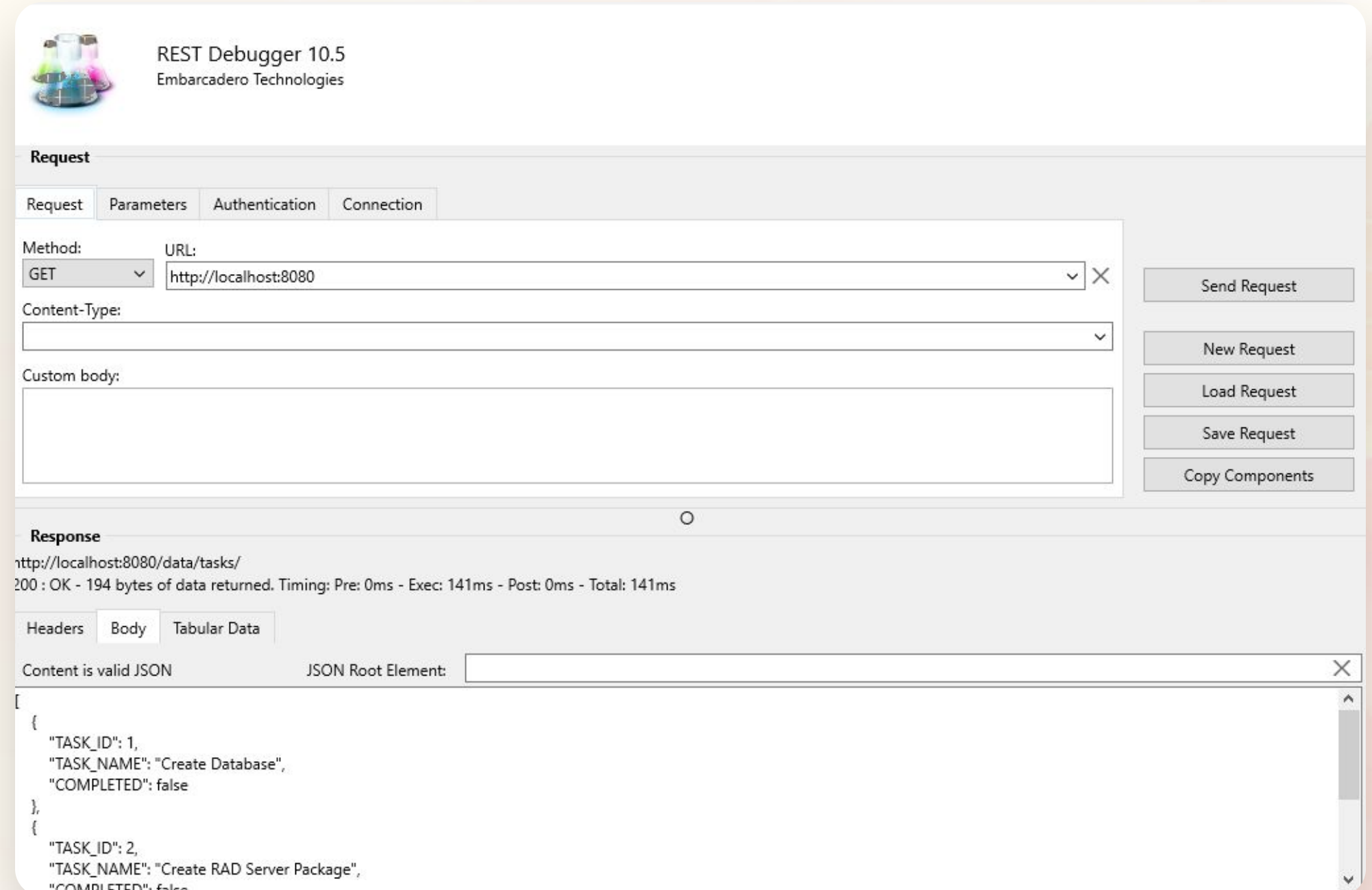


Blog Post



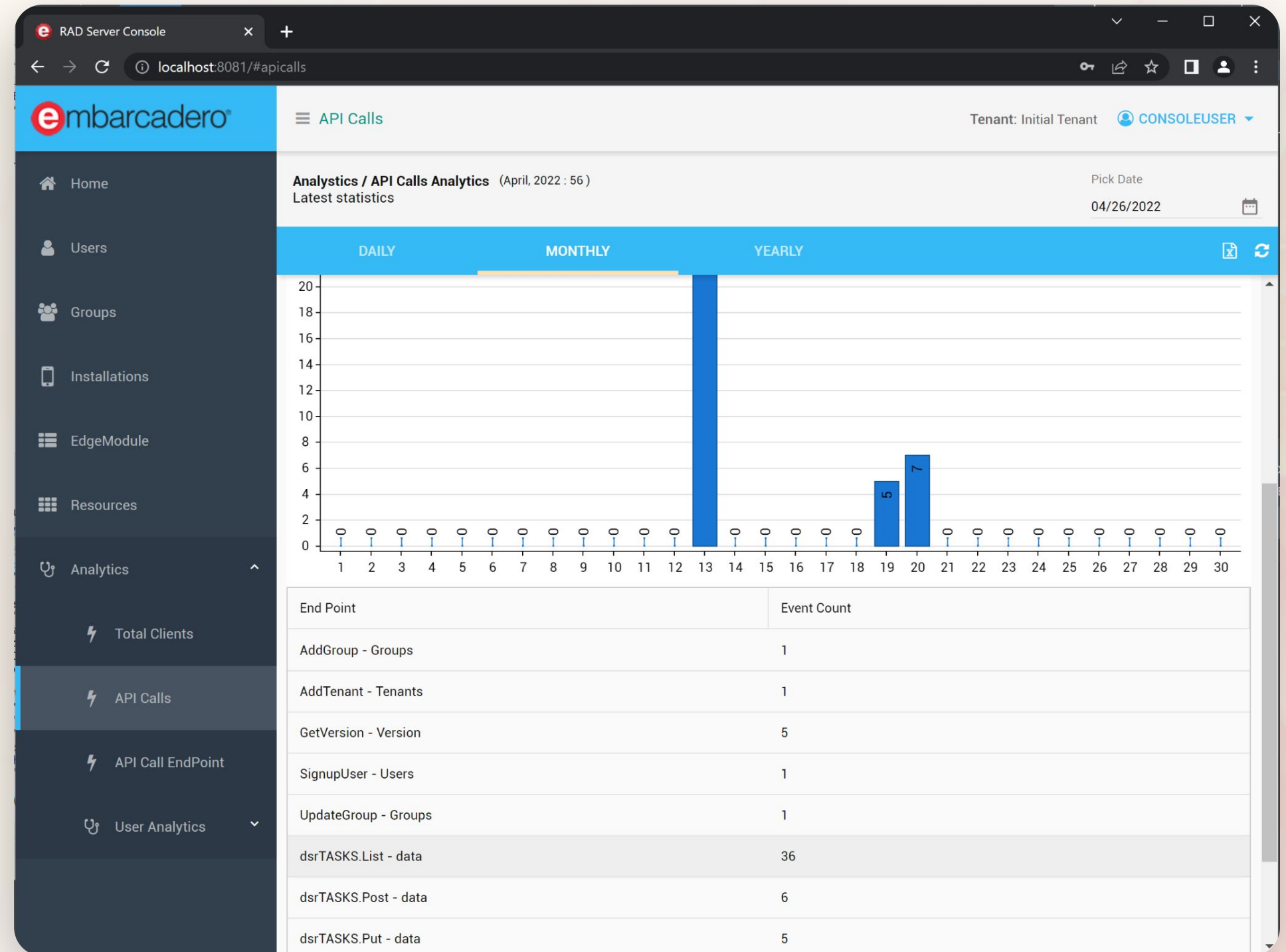
REST Debugger

- Test your own or 3rd party APIs
- Multiple authentication methods
- See results in JSON or tabular data
- Copy components to RAD Studio



Analytics

- Advanced and granular analytics
- Verify most and least used endpoints
- User based analytics
- Multi-tenancy statistics
- Drill down into specific details



Licensing RAD Server



MULTI-SITE



SINGLE-SITE



LITE

Features Included

SAME FEATURES INCLUDED WITH ALL EDITIONS

Description

Multiple locations on prem or cloud

Single location on prem or cloud

Multiple locations as standalone app

Scalability

Unlimited Multi Node (Load Balancer)

Unlimited Multi Node (Load Balancer)

Single node

Supported Platforms

Windows/Linux/Docker

Windows/Linux/Docker

Windows/Linux (executable)

Deployment Model

Multi physical sites

Single site

Multi physical sites

Included With

Architect

Enterprise

Architect/Enterprise

Security

Based on selected backend

Based on selected backend

No HTTPS Support (Reverse Proxy)

InterBase

InterBase Server

InterBase Server

IBToGo (copy & paste)

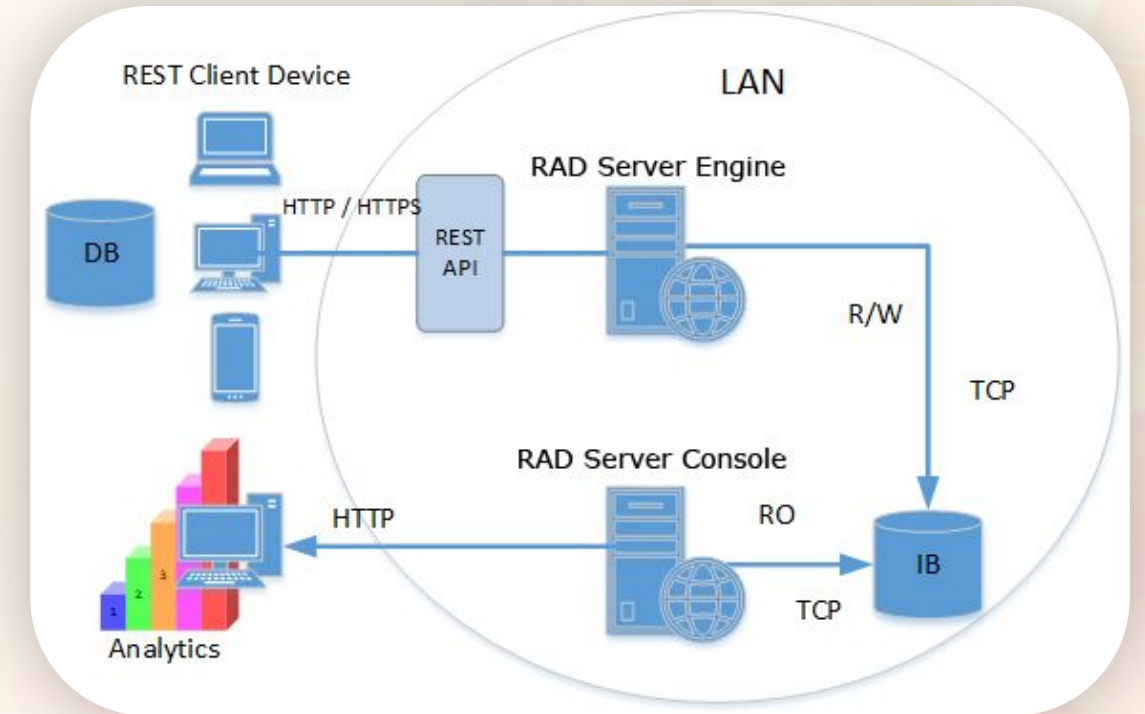
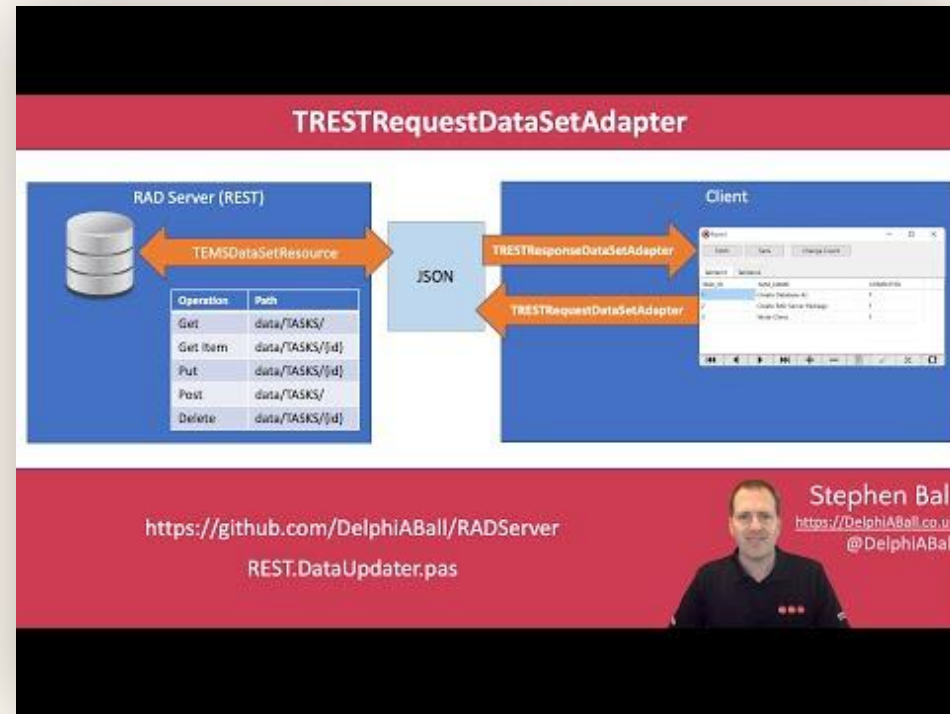
License Management

License for each deployment

License for each deployment

Free to deploy

More information



Blog Post



YouTube



DocWiki





Q&A



Antonio Zapater

Pre-sales consultant
Embarcadero Technologies
antonio.zapater@embarcadero.com

RAD Server Info

